



BLACK BRICK

GLASS RAILING

BLACK BRICK

INDUSTRIAL WINDOWS

10'

5'

20'

10' PUBLIC ALLEY

6TH ST.

A016

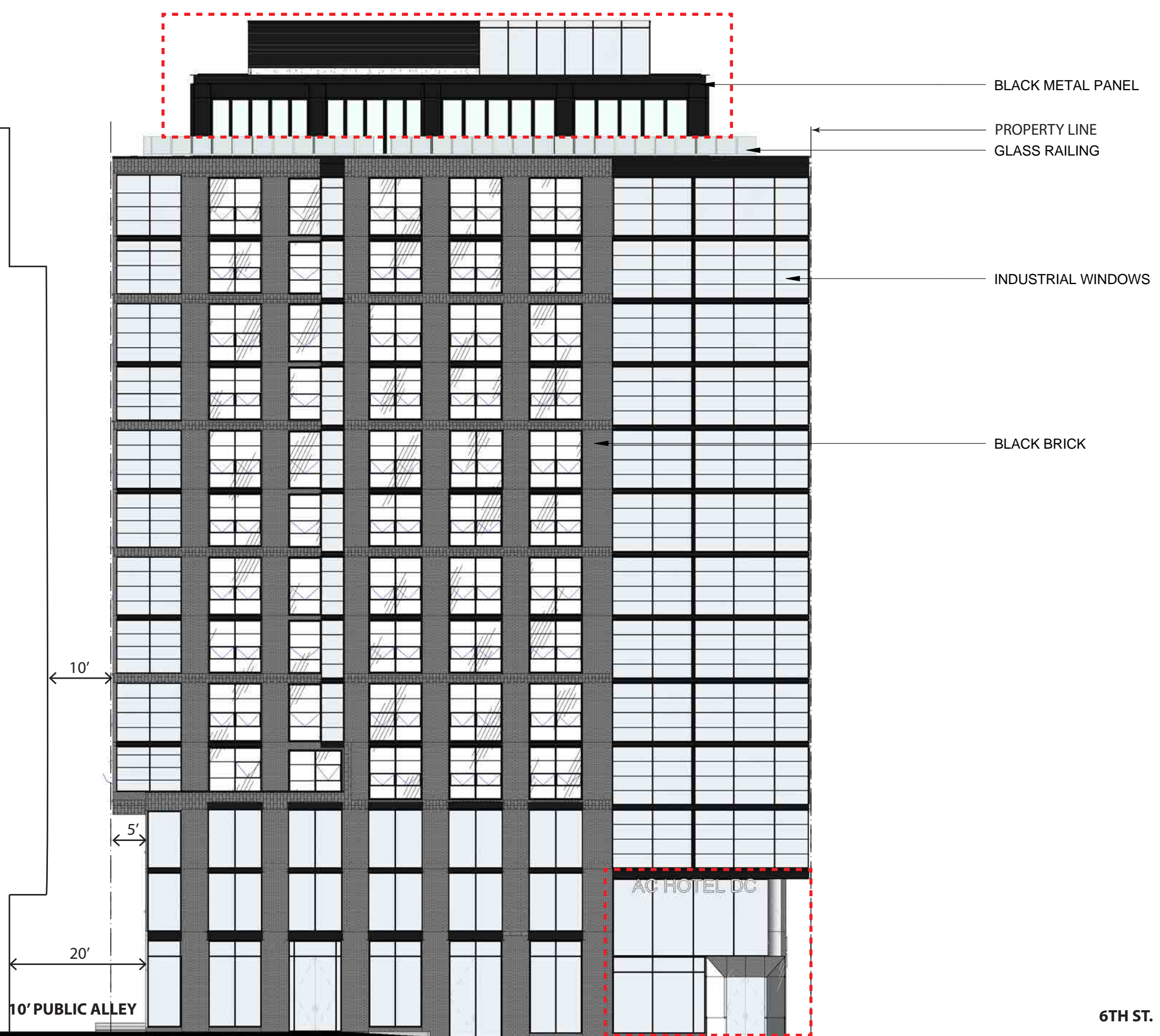
6TH & K HOTEL N.W., WASH. DC  
SHEET | A014

SOUTH ELEVATION | APPROVED

SCALE: 1/16"=1'-0"  
DATE: 09.17.2018

Board of Zoning Adjustment  
District of Columbia  
CASE NO. 1958/A  
EXHIBIT NO. 5B  
**FILLAT +**  
ARCHITECTURE

© Copyright 2016. FILLAT + ARCHITECTURE All rights reserved.



BLACK METAL PANEL

PROPERTY LINE  
GLASS RAILING

INDUSTRIAL WINDOWS

BLACK BRICK

10'

5'

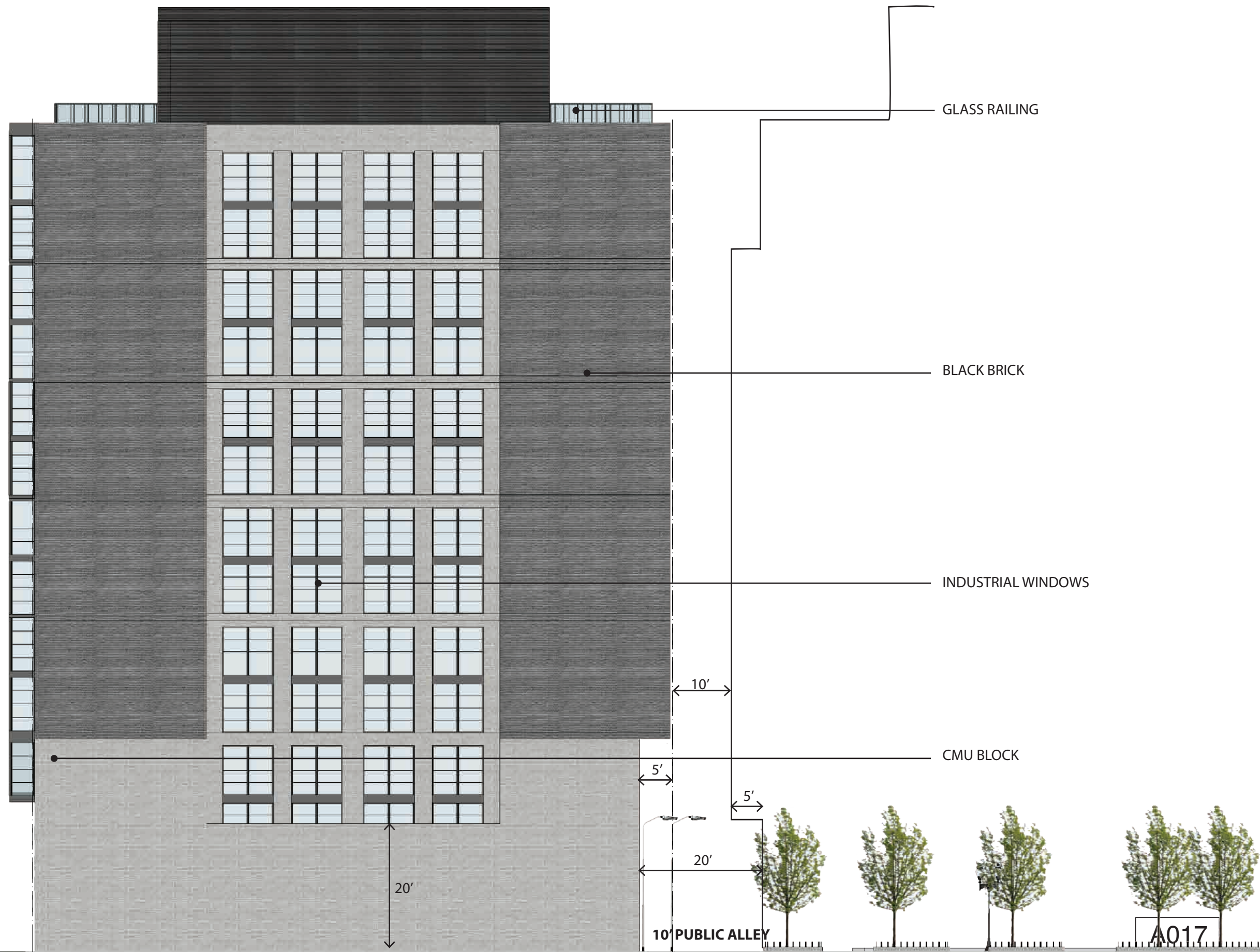
20'

10' PUBLIC ALLEY

AC HOTEL DC

6TH ST.

A016



6TH ST.

6TH & K HOTEL N.W, WASH. DC  
SHEET | A015

NORTH ELEVATION | APPROVED

SCALE: 1/16"=1'-0"  
DATE: 09.17.2018

**FILLAT+**  
ARCHITECTURE

© Copyright 2016. FILLAT + ARCHITECTURE All rights reserved.

BLACK METAL PANEL

GLASS RAILING

INDUSTRIAL WINDOW

INDUSTRIAL WINDOW

BLACK BRICK

EIFS

SPLIT FACE BLOCK

PROPERTY LINE

10'

5'

20'

10' PUBLIC ALLEY

6TH ST.

A017

K ST.



BLACK BRICK

BLACK BRICK

INDUSTRIAL WINDOWS



A018

6TH & K HOTEL N.W., WASH. DC  
SHEET | A016

EAST ELEVATION | APPROVED

SCALE: 1/16"=1'-0"  
DATE: 09.17.2018

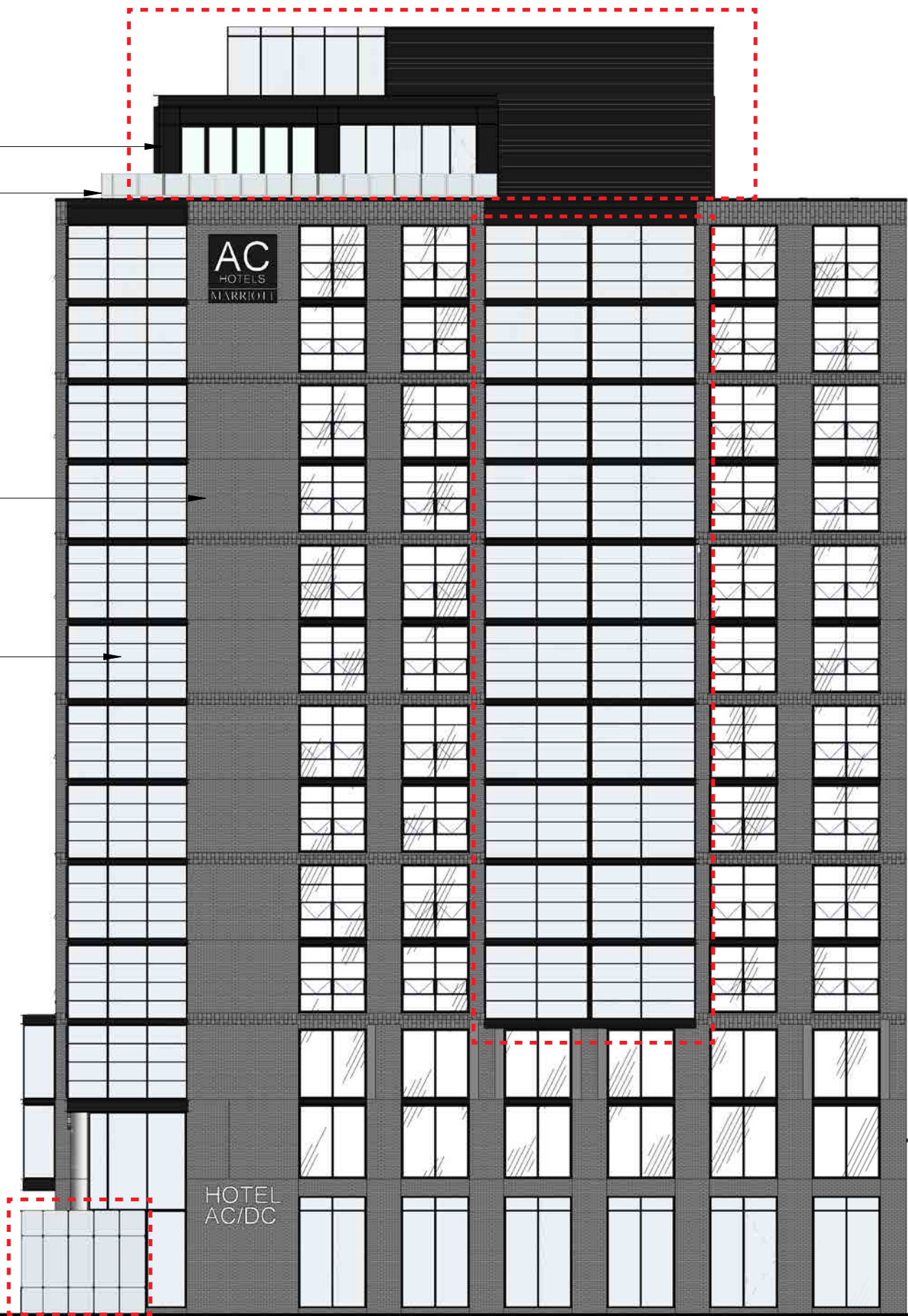
**FILLAT+**  
ARCHITECTURE

BLACK METAL PANEL

GLASS RAILING

BLACK BRICK

INDUSTRIAL WINDOW



K ST.



A018



6TH & K HOTEL N.W, WASH. DC  
SHEET | A017

WEST ELEVATION | APPROVED

SCALE: 1/16"=1'-0"  
DATE: 09.17.2018

K ST. A019

**FILLAT+**  
ARCHITECTURE

BLACK METAL PANEL

GLASS RAILING

BLACK BRICK

INDUSTRIAL WINDOW

LOUVER

INDUSTRIAL WINDOW

GLASS RAILING

SPLIT FACE BLOCK

K ST.

A019





A020

6TH & K HOTEL N.W, WASH. DC  
SHEET | A018

VIEW1 | APPROVED

DATE: 09.17.2018

**FILLAT+**  
ARCHITECTURE



A020

6TH & K HOTEL N.W, WASH. DC  
SHEET | A019

VIEW1 | PROPOSED

DATE: 09.17.2018

**FILLAT+**  
ARCHITECTURE



A021

6TH & K HOTEL N.W, WASH. DC  
SHEET | A019

VIEW2 | APPROVED

DATE: 09.17.2018

**FILLAT+**  
ARCHITECTURE



A021

6TH & K HOTEL N.W, WASH. DC  
SHEET | A020

VIEW2 | PROPOSED

DATE: 09.17.2018

**FILLAT+**  
ARCHITECTURE



A022

6TH & K HOTEL N.W, WASH. DC  
SHEET | A020

VIEW3

DATE: 09.17.2018

**FILLAT+**  
ARCHITECTURE



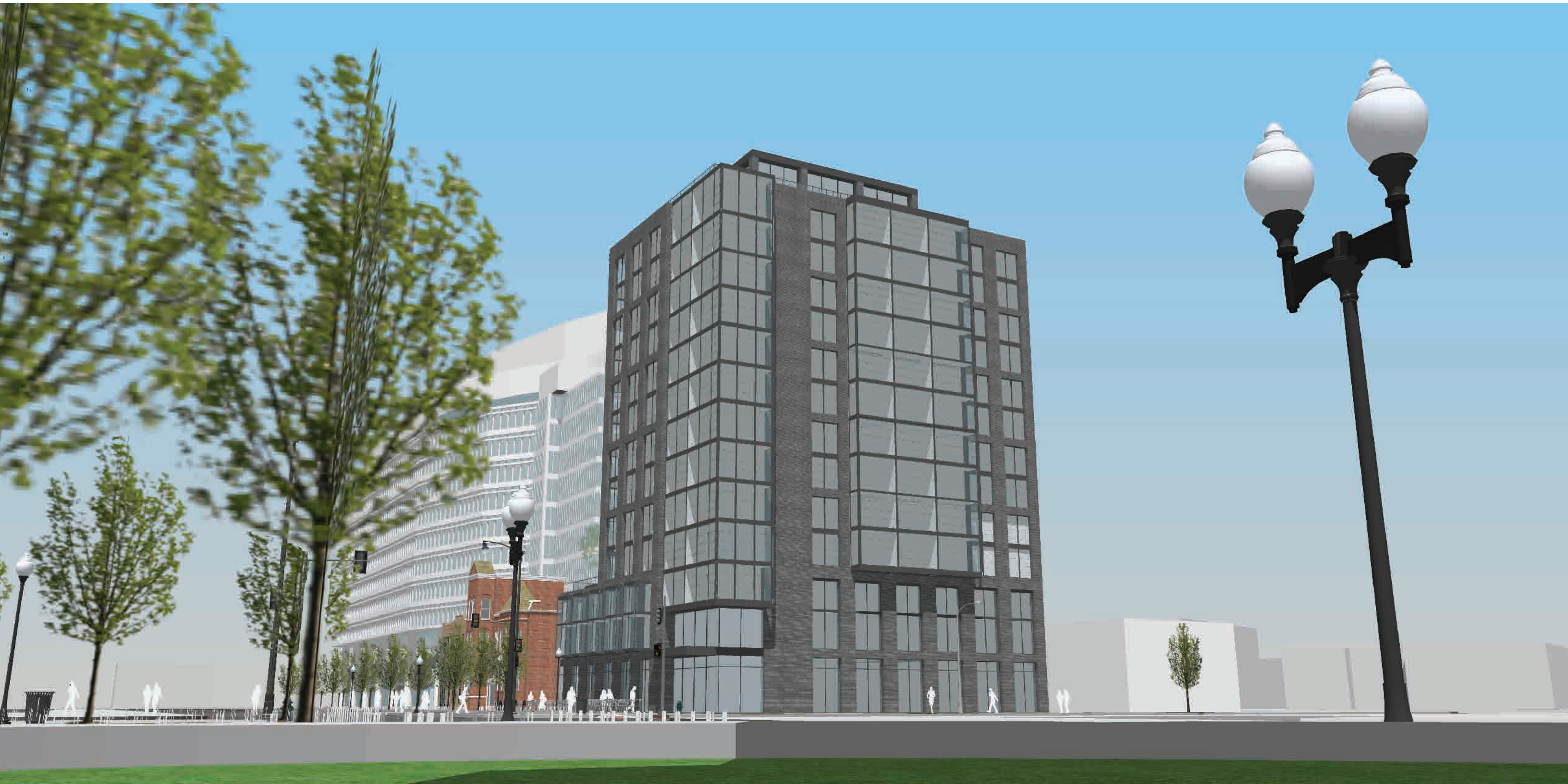
A022

6TH & K HOTEL N.W, WASH. DC  
SHEET | A021

VIEW3 | PROPOSED

DATE: 09.17.2018

**FILLAT+**  
ARCHITECTURE



A023

6TH & K HOTEL N.W, WASH. DC  
SHEET | A021

VIEW4

DATE: 09.17.2018

**FILLAT+**  
ARCHITECTURE



A023

6TH & K HOTEL N.W., WASH. DC  
SHEET | A022

VIEW4 | PROPOSED

DATE: 09.17.2018

**FILLAT+**  
ARCHITECTURE